



SPACE COAST QUILTERS

NEWSLETTER

Volume 2, Issue 9

November / December 2010

Where Quilts Are Launched

Editor: Patricia Wilkins

321-383-4796

WizardsCastle@cfl.rr.com

2010 – 2011 OFFICERS

President	Ann Giles	268-1969
	anng@cfl.rr.com	
1st VP	Elaine Glasgow	383-1850
	rglasgow2@cfl.rr.com	
2nd VP	Joseph Wilkins	749-9398
	tazmanjoseph@yahoo.com	
Donations/ Charity VP	Ann Hurst	693-0872
	Ahurst1016@aol.com	
Treasurer	Barbara Anderson	269-4564
	mrs.a68@juno.com	
Secretary	Barbara Arden	264-6159
	barbvard@bellsouth.net	

NOVEMBER GUILD MEETING:

Date:	Wednesday, 17 November.
Where:	First Baptist Church, 303 Main St., Titusville, FL.
Time:	9:30 a.m.
Program:	Jodie Barrows on Square in a Square.
Refreshments:	Mary Pat Lynch, Katherine Hinds, Elaine Glasgow, Ann Giles, Crystal Mays, Mae Webb, and Birgitt Tischer-Pocock.
Clean-up:	As mentioned above.

OCTOBER BOARD & QUILT SHOW MEETINGS:

Date:	Wednesday, 1 December.
Where:	First Baptist Church, 303 Main St., Titusville, FL.
Time:	9:30 a.m.

PRESIDENT'S MESSAGE

Dear Members:

It's November and we are definitely in the Holiday Season. The weather is starting to get cooler and the stores are already displaying Christmas items. Along with the holidays Space Coast Quilters are in Quilt Show Mode. We need to continue working on projects for the Boutique, quilts to enter into the show, collect advertisements, gather door prizes, and the many little things that need attention. When Pam, Ruth, or Myra call for jobs that need to be filled and completed, please answer with a Yes and a great big smile.

Happy Thanksgiving to all, see you at the November meeting.

Ann Giles, President



SPACECOAST QUILT GUILD GENERAL MEETING – OCTOBER 20, 2010

The meeting was called to order at 9:30 a.m. by President, Ann Giles, with the Pledge of Allegiance. There were 75 members and 3 guests present. We now have a total of 155 members in our guild. Copies of the Customs and Traditions will be available in November for our members.

Rose Palek is home from the hospital. We gave 4 comfort quilts this past month. They went to Dot Morgan, Kathy Stewart, Rosemary Early, and Terry Chase. The Christmas quilt for our members has been completed. Tickets are \$1.00 apiece or 6 for \$5.00.

We donated 60 quilts to Beta, Highway Patrol, Parrish Hospital, and the Heart Association. 14 quilts were taken to the women's prison in West Virginia and we gave 4 quilts to a family in Mims whose house was burned down.

Patricia Wilkins made a motion to accept the minutes as written. Liz Sollogub seconded it. Passed.

The guild will have a booth at KARS Park on October 30th and at Fox Lake Park on November 20th to sell the Space quilts. The treasurer's report was read. Baskets were won by Mona Thomas and Ann McCauley. We have made 7 twin size afghans and 24 wheel chair coverlets.

Jodi Barrows will be our speaker in November. She will be holding two classes. One on Thursday, November 18th will be from 1-4 p.m. and the one on Friday, November 19th will be from 9 a.m. to 4 p.m. Both classes will be at the Police Hall of Fame.

Show and Tell was shown by: Judith Riddle, Sherri Larson, Ann Giles, Carole Hommel, Jo Charvet, Mae Webb, Beth Besaw, Birgitt Tischer-Pocock, Barbara Arden, Rosemary Earley, Pat Reid, Cora Posthelwait, Beth Schmidt, and Kay Deffenbaugh.

Nan Moore then gave a presentation on how and why you should have your quilts appraised.

The meeting was adjourned at 11:10 a.m.

Barbara Arden, Secretary



BIRTHDAYS

November

Mary Ann Sheppard	11/01
Barbara Arden	11/02
June Baker	11/02
Ann Giles	11/05
Jean Guise	11/05
Diana Thompson	11/06
Elaine Gross	11/16
Ann Lofton	11/16
Carole Hommel	11/17
Fran Crosby	11/18
Reva (Nita) Eggers	11/19
Fay Levine	11/19
Ann McCauley	11/23
Alice Brown	11/26
Suzanne Forbes	11/27
Leona Monzel	11/29

December

Cecilia Reid	12/01
Brigitt Tisher-Pocock	12/01
Patricia Reid	12/03
Connie Heil	12/10
Kathy Stewart	12/10
Dorothy Purdie	12/12
Rachel Snider	12/14
Kathy Baker	12/15
Sharon Hollenbeck	12/16
Vivian Hansen	12/18
Katherine Hinds	12/18
Billie Staton	12/21
Nancy Evans	12/23
Carol Kohlscheen	12/23
Ruth Sultz	12/26
Eleanor Boette	12/28
Nancy Smith	12/29

EDUCATIONAL CLASSES

These classes are for all quilters (beginners - advanced) and opened to the public. A donation for the Church's Food Pantry (two canned goods or \$2.00) is all that it will cost you. Call Kathy Stewart at 453-1399 or e-mail katquilts2005@aol.com to reserve your spot in the next Educational Class.

Quilt Sleeve Class

Teacher: Jo Charvet

Phone # 321-267-0525 or E-mail jcharvet@cfl.rr.com

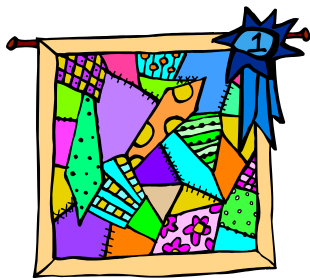
Date: 3 November 2010
Time: 9:00 a.m.
Place: St. Gabriel's Episcopal Church

Sewing machine and sewing supplies

Fabric (width of the quilt)

A quilt to put the sleeve on.

January's education class will be on beginning embroidery taught by Barbara Arden. Call Kathy if you want to be in the class.



QUILT SHOW NEWS

FABRIC BOOTH - Elaine needs fabric and people to help cut / package!!! Your help is needed for this to be a success! You can cut your fabric at home or bring it every Wednesday to cut. We have some fabric for cutting but, as any Quilter knows you can always use more. The fabric is to be cut into 5 ½" squares and 2 ½" strips. Elaine would like to have this all package up prior to Christmas. If you need further information please call Elaine Glasgow at 383-1850.

BED TURNING - If you have a quilt that is at least 50 years old or older; submit a picture to Kathy for her to choose which quilts will be in the bed turning. If you need further information please call Kathy Stewart at 453-1399.

DONATION QUILT - Joyce Tesdall will be available, at the church, on the first and third Wednesdays in November with tickets. She will also be happy to take your sold tickets! Your family and friends would love to own a beautiful quilt in the fall colors. Call Joyce Tesdall at 268-4334 or email her at: terrytesdallsr@yahoo.com; if you need more tickets. If everyone just takes a pack of tickets we will make this a great donation quilt fund raiser.

DOOR PRIZES - Cora and Rosemary need door prizes. They are accepting any assortment of quilting materials or gently used books / patterns. If you call ahead when you are going to bring items they will be happy to meet you at the Church on Wednesday mornings. Please call either Cora Postlethwait at 698-7943 or Rosemary Early at 453-2809.

MAGAZINES / BOOK BOOTH - Barbara is collecting Quilting magazines and books. If you need further information call Barbara Arden at 321-264-6159; she is always at the Church on Wednesday to accept your donations.

BOUTIQUE - Linda, Connie, and Jane are still looking for you items. You may bring your items to the next two General Meetings (November 17, 2010 and January 19, 2011) or the at the Christmas luncheon. If you call ahead they would be glad to meet you at the Church any Wednesday morning. Please call Linda Somers at 383-0385, Connie Heil at 383-8279, or Jane Giles at 269-7839.

ONLY 100 DAYS TILL THE QUILT SHOW

ONLY 87 DAYS TO TURN YOUR ENTRY FOR THE QUILT SHOW

Just an FYI - Sally Cascario says her last day to take quilts for Quilting for the Quilt Show is December 15th.



November 2010



Sunday	Monday	Tuesday	Wednesday	Thursday	Friday	Saturday
	1 ALL SAINTS DAY	2 Regular Tuesday Group Meeting a.m. and p.m. at St. Gabriel's. ALL SOULS DAY ELECTION DAY	3 Educational Class – Sleeves. 9 – 11 a.m. at St. Gabriel's.	4	5 GUY FAWKES DAY	6
7 Daylight Saving Time Ends (Set your clocks back one hour) 	8	9 Regular Tuesday Group Meeting a.m. and p.m. at St. Gabriel's.	10 Marine Corps Birthday	11 Veterans Day Remembrance Day Armistice Day	12	13 Sadie Hawkins Day
14	15	16 Regular Tuesday Group Meeting a.m. and p.m. at St. Gabriel's.	17 GENERAL MEMBERSHIP MEETING.	18 Great American Smokeout	19	20
21	22	23 Regular Tuesday Group Meeting a.m. and p.m. at St. Gabriel's.	24	25 THANKSGIVING DAY 	26	27
28	29	30 Regular Tuesday Group Meeting a.m. and p.m. at St. Gabriel's.				



December 2010



Sunday	Monday	Tuesday	Wednesday	Thursday	Friday	Saturday
			1 BOARD MEETING & QUILT SHOW MEETING.	2 Hanukkah Begins.	3 Christmas Luncheon at APHF 11:00 a.m.	4
5	6 St. Nicholas Day	7 Pearl Harbor Day	8 Feast of the Immaculate Conception.	9	10 Human Rights Day	11
12	13	14	15 Last day to turn your Quilts into Sally to be quilted for the Quilt Show.	16	17 Wright Brothers Day Aviation Day	18
19	20	21	22	23	24 Christmas Eve 	25 Christmas Day
26	27	28	29	30	31 New Year's Eve	

MEMBERSHIP UPDATES:

Member Dropped by Error:

Spears, Jalaine
971 Palm St.
Cocoa, Fl 32927
Ph. 321-636-6505
B. Day: 07/29
E-mail: jkspears1@gmail.com

Rejoined Members:

Hahne, Suzan
855 Dow Lane
Titusville, Fl 32780
Ph. 321-258-6826
B. Day: 10/10
E-mail: gshahne@msn.com

Major, D. Joan
495 N. Washington #42
Titusville, Fl 32796
Ph. 321-383-7655
B. Day: 08/28

Phone number updates:

Myra Ducharme 321-890-8808 (cell)

New Members:

Baker, Kathy (use Cell number)
1975 Payne Stewart Dr.
Titusville, Fl 32796
Ph. 603-929-8650, Cell: 978-265-0552
B. Day: 12/15
E-mail: kabakes@gmail.com
Summer: 30 Towle Farm Rd, unit #8,
Hampton, NH 03842

McCauley, Ann
800 Masthead Lane
Edgewater, Fl 32141
Ph. 386-402-4574, cell 860-478-9109
B. Day: 11/23
E-mail: Anniermcc2@aol.com
Summer: 51 Old Springfield Rd.
Stafford Springs, Ct 06076

E-mail Addition:

Terry Chase terrychase@centurylink.net
Fran Crosby francy2645@gmail.com
Anita O'Neal w.oneal@netzero.com



Fox Lake
Saturday, November 20, 2010
4400 Fox Lake Road, Titusville, Florida
Open to the public 9 a.m. to 4 p.m.

Our Guild will have a booth along with Cecilia Reid; so come out and support us.



CHRISTMAS LUNCHEON

Date: 3 December 2010
Place: American Police Hall of Fame, 6350 Horizon Drive, Titusville, FL 32780
Time: 11:00 a.m. Doors open; 11:30 a.m. Lunch served.
Price: \$18.00; Catered and Served by Pumpnickels. Tickets will go on sale at the October meeting and final sales at the November meeting. See Patricia Wilkins for your ticket. Hurry the tickets are going fast!!! Don't miss this!

Menu Choices: Each choice will come with a vegetable and a starch.

#1: Chicken Hunter

#2: Roast Pork

The Menu Includes: Salad, Rolls, and Butter. Beverages: Coffee and Iced Tea. Dessert will be a variety of pastries.

The Museum will be open for you to walk around before and after the Luncheon.

NEWPORT BAG CLASS

You missed a great class! We all had a great time and Beth is a great teacher. Here are some of the comments from the students.



Just push a little harder; it's coming out now!



Pin side A to B then measure twice!



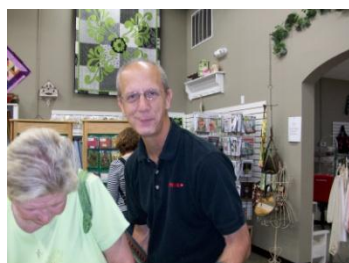
The overachievers!
They got their bags
done. Great work
ladies.



October Shop Hop

By: Patricia Wilkins

Did we ever shop; we toured Central Florida! The Apopka Quilt Company, Bernina Sewing Center in Sanford, Clermont Sewing & Quilting, Cornerstone Quilt Shop in Orlando, Fireside Quilt Shop in Sanford, Nancy's Quilt Shop in Winter Garden, Quilter's Cove in Orlando, Sew-Mini-Things in Mt. Dora, and The Sewing Studio in Maitland. It was fun to visit all the shops and see new items. I think it was the company that went on the Hop that made it so wonderful; Suzanne, Eileen, Liz, and I. It wasn't just us – we were joined by two wonderful guides – Jack and Daniel (Suzanne's friends). Jack kept jacking off and Daniel just wanted lay in Suzanne's lap! Now are you sorry you didn't go on the Shop Hop with us! Told Suzanne I was going to print that! Jack and Daniel are the GPS voices. We didn't win anything but, we did meet some wonderful shop owners and their staff. Here are some pictures of our adventures. Enjoy.

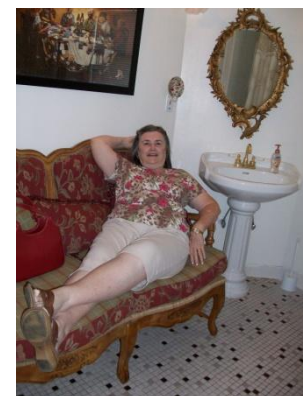


Thank you all for showing us a great time!



The Shop Hop Gang.
Suzanne, Patricia, Eileen,
and Liz.

These are the squares we
received to make a quilt. Maybe,
next year!



Liz relaxing at the
Retreat.

QUILTS OF VALOR – After the quilt show we will resume meeting in March on the 4th Tuesday of the month. However, Ellie still needs blocks to put together 8 quilts for our members who have family serving to protect us. They only need to be 8 ½ inch blocks. Remember, if you have a relative serving in any Branch of the Military please contact Ellie Boette at edboette@yahoo.com or call her at 1-904-305-9616.

FLORIDA FALLEN HEROES QUILTS - Pam Butner and Ruth Sultz need 9 ½ inch square with a patriotic design (the center needs to be white / beige so that the name of deceased military person can be put on it). It takes 30 squares to make one quilt. Turn your squares into Pam and Ruth. They need more squares to make more quilts. Take a few minutes to make a square or two for this project.

LULLABY QUILTS – The Lullaby Quilt Book of Patterns, “Stripping With Pat Reid; in the Reeds,” are for sale for \$1.00. They will be available every Wednesday. We just had another 50 copies made. We have already sold over 100 copies. They make great gifts and Pat will happily sign your copy.

Space Coast Quilters Guild
P.O. Box 2996
Titusville, FL 32781-2996



“GOD BLESS AMERICA”